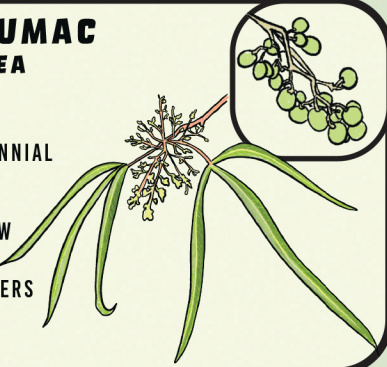


**AFRICAN SUMAC**  
*SEARSIA LANCEA*

**LIFE FORM:** TREE  
**DURATION:** PERENNIAL  
**FAMILY:** CASHEW

20-30' TREE, NARROW LEAVES, 3 LEAFLETS, YELLOW-GREEN FLOWERS



**GIANT REED**  
*ARUNDO DONAX*

**LIFE FORM:** GRAMINOID  
**DURATION:** PERENNIAL  
**FAMILY:** POACEAE

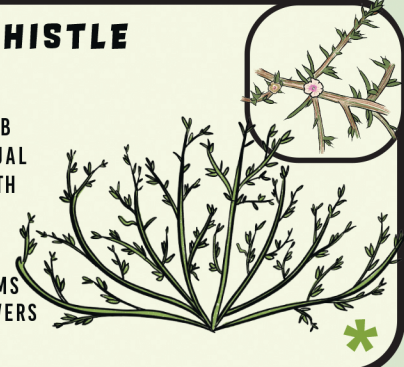
GROWING IN LARGE CLUMPS UP TO 30+ FT TALL, CURVED LEAVES WITH ALTERNATE PATTERN, BAMBOO-LIKE, GROWS FROM RHIZOMES



**RUSSIAN THISTLE**  
*KALI TRAGUS*

**LIFE FORM:** FORB  
**DURATION:** ANNUAL  
**FAMILY:** AMARANTH

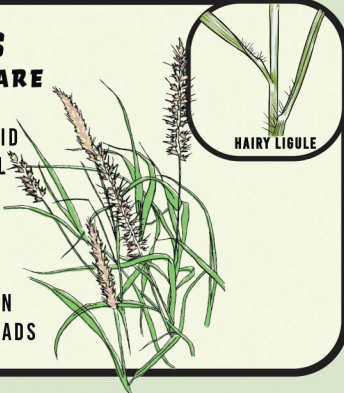
ALSO CALLED TUMBLEWEED, STIFF SPINY LEAFLESS STEMS WITH AXILLARY FLOWERS (1 PER LEAF)



**BUFFELGRASS**  
*PENNISETUM CILIARE*

**LIFE FORM:** GRAMINOID  
**DURATION:** PERENNIAL  
**FAMILY:** POACEAE

MESSY BUNCH GRASS, 3-5 FEET TALL, HAIRY LIGULE, PURPLE TO BROWN BOTTLEBRUSH FLOWER HEADS



**LONDON ROCKET**  
*SISYMBRIUM IRIQ*

**LIFE FORM:** FORB  
**DURATION:** ANNUAL/BIENNIAL  
**FAMILY:** MUSTARD

ERECT STEMS UP TO 20" TALL, STEM LEAVES ARE TAPERING FROM A BASAL ROSETTE, YELLOW FLOWERS BECOME SILIQUES



**SAHARA MUSTARD**  
*BRASSICA TOURNEFORTII*

**LIFE FORM:** FORB  
**DURATION:** ANNUAL  
**FAMILY:** MUSTARD

SMALL YELLOW BUTTERFLY-SHAPED FLOWERS, STEMS COVERED IN SIMPLE HAIRS, MATURE BASAL LEAVES DEEPLY SERRATED WITH DENSE WARTS (TRICHOMES)



**COMMON SOW THISTLE**  
*SONCHUS OLERACEUS*

**LIFE FORM:** FORB  
**DURATION:** ANNUAL/BIENNIAL  
**FAMILY:** SUNFLOWER

SEVERAL YELLOW FLOWERS CLUSTERED AT HEAD, ALTERNATING BROADLEAF, LOOKS LIKE DANDELION



**MALTA STAR THISTLE**  
*CENTAUREA MELITENSIS*

**LIFE FORM:** FORB  
**DURATION:** ANNUAL  
**FAMILY:** SUNFLOWER

STEMS GROW UP TO 2 FEET TALL, YELLOW SPINY FLOWERS, LOBED BASAL LEAVES WITH PRICKLY HAIRS AND WINGED STEMS



**SALT CEDAR**  
*TAMARIX RAMOSISSIMA*

**LIFE FORM:** TREE  
**DURATION:** PERENNIAL  
**FAMILY:** TAMARISK

SHRUB-LIKE TREE, UP TO 25 FEET, SMALL PINK FLOWER CLUSTERS



**FOUNTAIN GRASS**  
*PENNISETUM SETACEUM*

**LIFE FORM:** GRAMINOID  
**DURATION:** PERENNIAL  
**FAMILY:** POACEAE

BOTTLEBRUSH-SHAPED FLOWER, STALKS WITH REDDISH-PURPLE, GROWS IN CLUSTERS 2-3 1/2' TALL



**RED BROME**  
*BROMUS RUBENS*

**LIFE FORM:** GRAMINOID  
**DURATION:** ANNUAL  
**FAMILY:** POACEAE

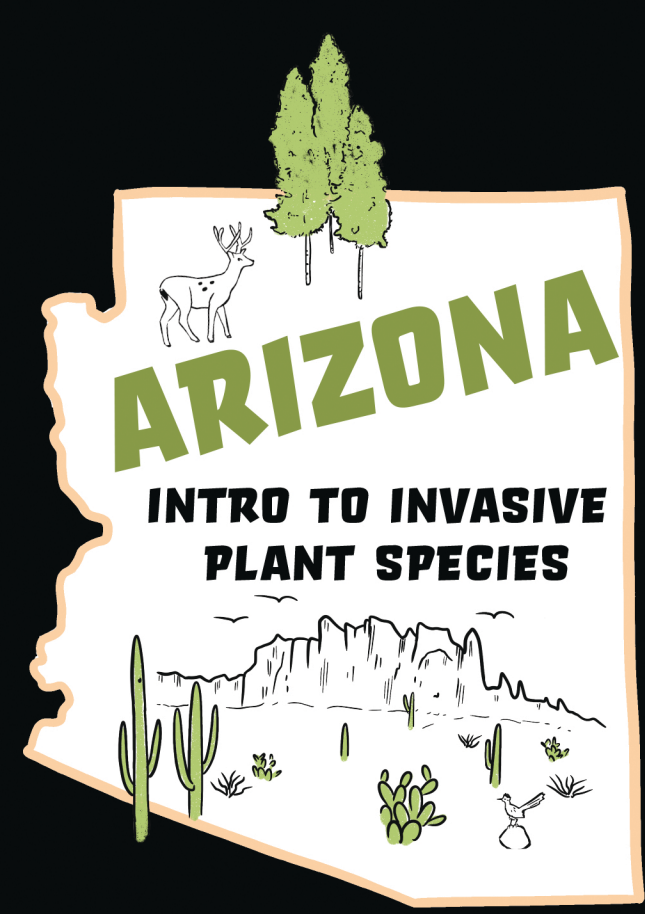
8-20 INCHES TALL, FEATHERY RED FOLIAGE & SEED HEADS, BROWN/TAN WHEN MATURE



**STINKNET**  
*ONCOSIPHON PILULIFER*

**LIFE FORM:** FORB  
**DURATION:** ANNUAL  
**FAMILY:** SUNFLOWER

NUMEROUS (2-24) 2" BRIGHT YELLOW ORB FLOWER HEADS, FINELY DISSECTED "CARROT LIKE" LEAVES



**ARIZONA**

**INTRO TO INVASIVE PLANT SPECIES**



**GUIDE TO 24 OF THE TOP INVASIVE SPECIES IN AZ**

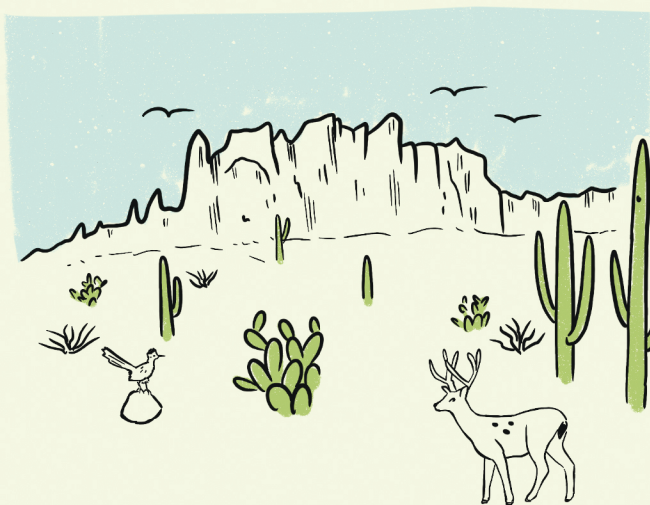
- 12 NORTHERN SPECIES
- 12 SOUTHERN/CENTRAL SPECIES
- SCIENTIFIC INFO
- IDENTIFYING FEATURES

**SOUTHERN/CENTRAL AZ**

PLANTS MARKED WITH A GREEN STAR ARE INVASIVE ACROSS ARIZONA



INVASIVE/NOXIOUS WEEDS DISPLACE NATIVE PLANTS, IMPACT WILDLIFE HABITAT, CLOG WATERWAYS AND INCREASE FIRE HAZARDS TOGETHER WE CAN LESSEN THEIR IMPACT



**BROUGHT TO YOU BY:**

- SOUTHWEST VEGETATION MANAGEMENT ASSOC
- DESIGNED TBY @REVOLTA\_ART, 2023

**LEARN MORE** ABOUT HOW TO IDENTIFY AND TREAT THESE NON-NATIVE INVASIVE SPECIES:  
[SWVMA.ORG/INVASIVE](http://SWVMA.ORG/INVASIVE)

OR



**SCAN QR CODE**

**CAMELTHORN**  
*ALHAGI MAURORUM*

**LIFE FORM:** SHRUB  
**DURATION:** PERENNIAL  
**FAMILY:** PEA

GREENISH STEMS WITH SPREADING YELLOW-TIPPED SPINES, GREEN/YELLOW TIPPED LEAVES, PINK TO MAROON FLOWERS



**LEAFY SPURGE**  
*EUPHORBIA ESULA*

**LIFE FORM:** FORB  
**DURATION:** PERENNIAL  
**FAMILY:** SPURGE

BRIGHT GREEN FLOWERS AND BELL-SHAPED BRACTS, ALTERNATE SMOOTH LINEAR LEAVES WITH ACUMINATE TIP



**SIBERIAN ELM**  
*ULMUS PUMILA*

**LIFE FORM:** TREE  
**DURATION:** PERENNIAL  
**FAMILY:** ELM

UP TO 70' TALL, ALTERNATE SERRATED LEAVES, ROUGH GRAY/BROWN BARK, PAPERY FLOWER CLUSTERS



**DALMATION TOADFLAX**  
*LINARIA DALMATICA*

**LIFE FORM:** FORB  
**DURATION:** PERENNIAL  
**FAMILY:** PLANTAIN

ERECT BLUEISH WAXY, UP TO 3' TALL, CLASPING HEART-SHAPED LEAVES, BRIGHT YELLOW 5-LOBED 2-LIP FLOWERS & ORANGE CENTER



**RUSSIAN KNAPWEED**  
*RHAPONTICUM REPENS*

**LIFE FORM:** FORB  
**DURATION:** PERENNIAL  
**FAMILY:** SUNFLOWER

SHOOTS & LOWER LEAVES HAVE DENSE GRAY HAIRS, URN-SHAPED FLOWER HEADS WITH SMOOTH PAPERY BRACTS WITH PINK, PURPLE OR WHITE FLOWERS



**SPOTTED KNAPWEED**  
*CENTAUREA STOEBE*

**LIFE FORM:** FORB  
**DURATION:** PERENNIAL  
**FAMILY:** SUNFLOWER

BLACK-TIPPED, SPINY BRACTS AT BASE OF FLOWER, 2-3 SOLITARY URN-SHAPED FLOWER HEADS ON EACH BRACT END



**DIFFUSE KNAPWEED**  
*CENTAUREA DIFFUSA*

**LIFE FORM:** FORB  
**DURATION:** PERENNIAL  
**FAMILY:** SUNFLOWER

THISTLE-LIKE, WHITE OR PURPLE FLOWERS, SINGLE STEM WITH MANY SPREADING BRANCHES, SHARP SPINE AT END OF BRACT



**RUSSIAN OLIVE**  
*ELAEAGNUS ANGUSTIFOLIA*

**LIFE FORM:** TREE  
**DURATION:** PERENNIAL  
**FAMILY:** OLEASTER

SHRUBBY THORNY TREE, SILVERY PALE LEAVES, AXILLARY YELLOW FLOWERS, YELLOW-BROWN FRUIT WITH SILVERY SCALES



**YELLOW BLUESTEM**  
*BOTHRIOCHLOA ISCHAEMUM*

**LIFE FORM:** GRAMINOID  
**DURATION:** PERENNIAL  
**FAMILY:** POACEAE

BLUEISH-GRAY CLUMP FORMING UP TO 4' TALL SILVERY REDDISH FAN-LIKE FLOWER CLUSTERS



**FULLER'S TEASEL**  
*DIPSACUS FULLONUM*

**LIFE FORM:** FORB  
**DURATION:** BIENNIAL  
**FAMILY:** HONEYSUCKLE

LONG POINTED LEAVES, UNDERSIDE SMALL SPINES, PRICKLY STEMS AND OVAL-SHAPED FLOWER HEAD, MANY WHITE TO PURPLISH FLOWERS



**SCOTCH THISTLE**  
*ONOPORDUM ACANTHIUM*

**LIFE FORM:** FORB  
**DURATION:** PERENNIAL  
**FAMILY:** SUNFLOWER

THICK SPIKY HAIR ON LARGE BROAD LEAVES, SPINY WINGED STEMS WITH WOOLY COATING, RICH PURPLE FLOWER HEADS



**YELLOW STAR THISTLE**  
*CENTAUREA SOLSTITIALIS*

**LIFE FORM:** FORB  
**DURATION:** WINTER ANNUAL  
**FAMILY:** SUNFLOWER

THISTLE-LIKE YELLOW FLOWERS, PALE THORNS UNDERNEATH FLOWERHEAD



**NORTHERN/CENTRAL AZ**